



**1990**  
**INSTITUTE**

**CHINA NOW**  
***China on the Move***

July 26 & 27, 2019



**1990**  
INSTITUTE

# China Now: China On the Move

Friday, July 26 and  
Saturday, July 27, 2019

101 Twin Dolphin Drive, Redwood City,  
California

In Partnership with the  
San Mateo County Office of Education



Cosponsored by  
USC US-China Institute



# China, Globalization, and the Environment

Mark Henderson  
Mills College  
Summer 2019



MADE IN TAIWAN  
R.O.C.

SPECIALLY  
MADE FOR  
**GUMP'S**  
MADE IN JAPAN

*Orase*  
Handpainted  
MADE IN JAPAN

MADE IN CHINA

MADE IN  
CHINA

MADE IN TAIWAN  
R.O.C.

日本製  
MADE IN JAPAN

EUR 122  
US 6-7Y  
MADE IN  
CHINA

100% SILK  
MADE IN CHINA  
RN# 7979D

% LINEN  
MADE  
SHANGHAI CHINA

DONALD J. TRUMP  
SIGNATURE COLLECTION

S  
100% LINEN  
MADE IN  
CHINA

MADE IN  
U.S.A.

Product of Spain

MADE IN MEXICO  
100% WOOL  
RN 47338

iPhone

Designed by Apple in California Assembled in China  
Model A1332 EMC 380A FCC ID: BCG-E2380A IC: 579C-E2380A

FC X CE 0682 !

MADE IN TAIWAN  
REPUBLIC OF CHINA

MADE IN USA  
米国产

MADE IN U.S.A.

FAIT AU QUÉBEC  
MADE IN CANADA

中国制造  
MADE IN CHINA

Keep year

# U.S. imports from selected sources (in millions)

Sum of IYR

\$600,000

\$500,000

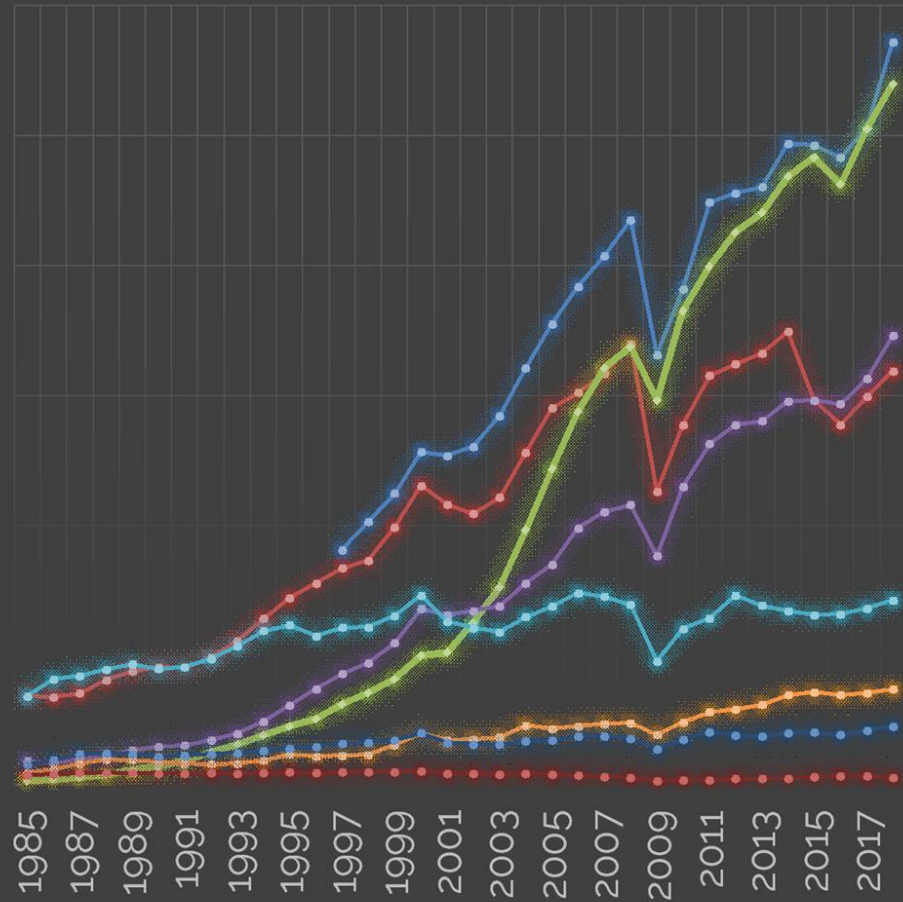
\$400,000

\$300,000

\$200,000

\$100,000

\$0



CTYNAME

- Europe
- Canada
- China
- Mexico
- Japan
- Korea, South
- Taiwan
- Hong Kong

Year\_n

Source:  
[US Census Bureau](#)



PORT OF OAKLAND

PORT OF OAKLAND

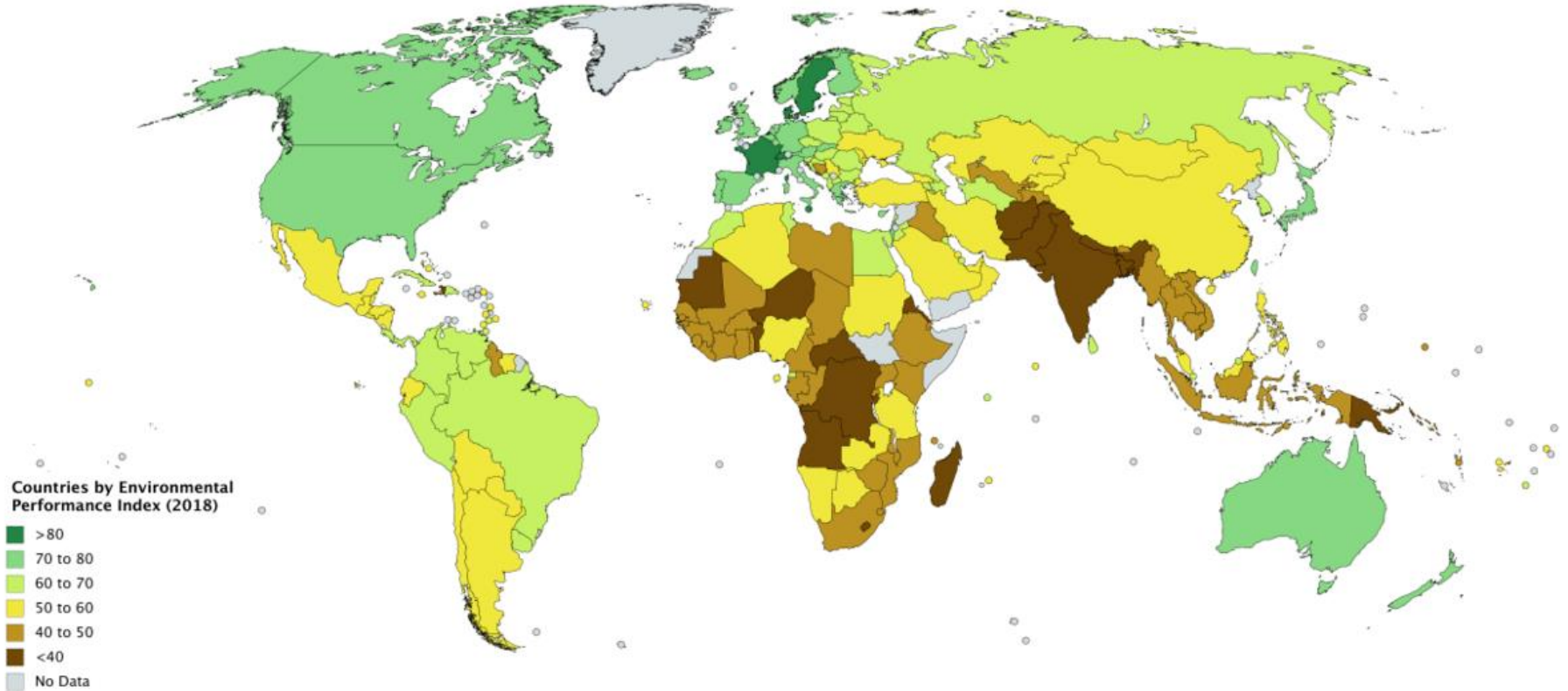
PORT OF OAKLAND

PORT OF OAKLAND

YANG MING

AP

# Environmental Performance Index (2018)





"...has all the makings of an economic classic."—*The New York Times*

Pietra Rivoli

# THE TRAVELS OF A T-SHIRT IN THE GLOBAL ECONOMY

SECOND EDITION

An Economist Examines  
the Markets, Power, and  
Politics of World Trade

New Preface  
and Epilogue  
with Updates on  
Economic Issues and  
Main Characters

WILEY





# Extraction



# Manufacturing



# Transportation



# Disposal

Company Overview - Zouping Be x +  
https://zpbeautex.en.alibaba.com/company\_profile.html?spm=a2700.supplier-normal.35.3.3f...

Alibaba.com Global trade starts here. Sourcing Solutions Services & Membership Help & Community

2YRS Zouping Beutex Co., Ltd. Favorite Supplier Trade Assurance Gold Supplier

# ZOUPING BEAUTEX CO., LTD.

WE HAVE INSISTED ON THE PRINCIPLE OF "SUPERIOR QUALITY, HONESTY AND INTEGRITY."  
Contact Man: Victor Wang mobile number: 00 86 137 9387 7061 Email: z...

Home Product Categories Company Profile Video Contacts

Company Overview 2YRS Zouping Beutex Co., Ltd. Chat

Selected Products

Production Capacity

ZOUPING BEAUTEX CO., LTD. LIMITED, which is a company registered in China. Messenger

alibaba.com

Google Earth x +  
https://earth.google.com/web/@36.8705061,117.7344804,106.7... ☆

DAIXI RESIDENTIAL DISTRICT 戴溪

Sanba Reservoir

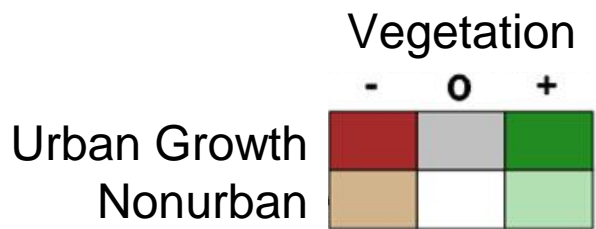
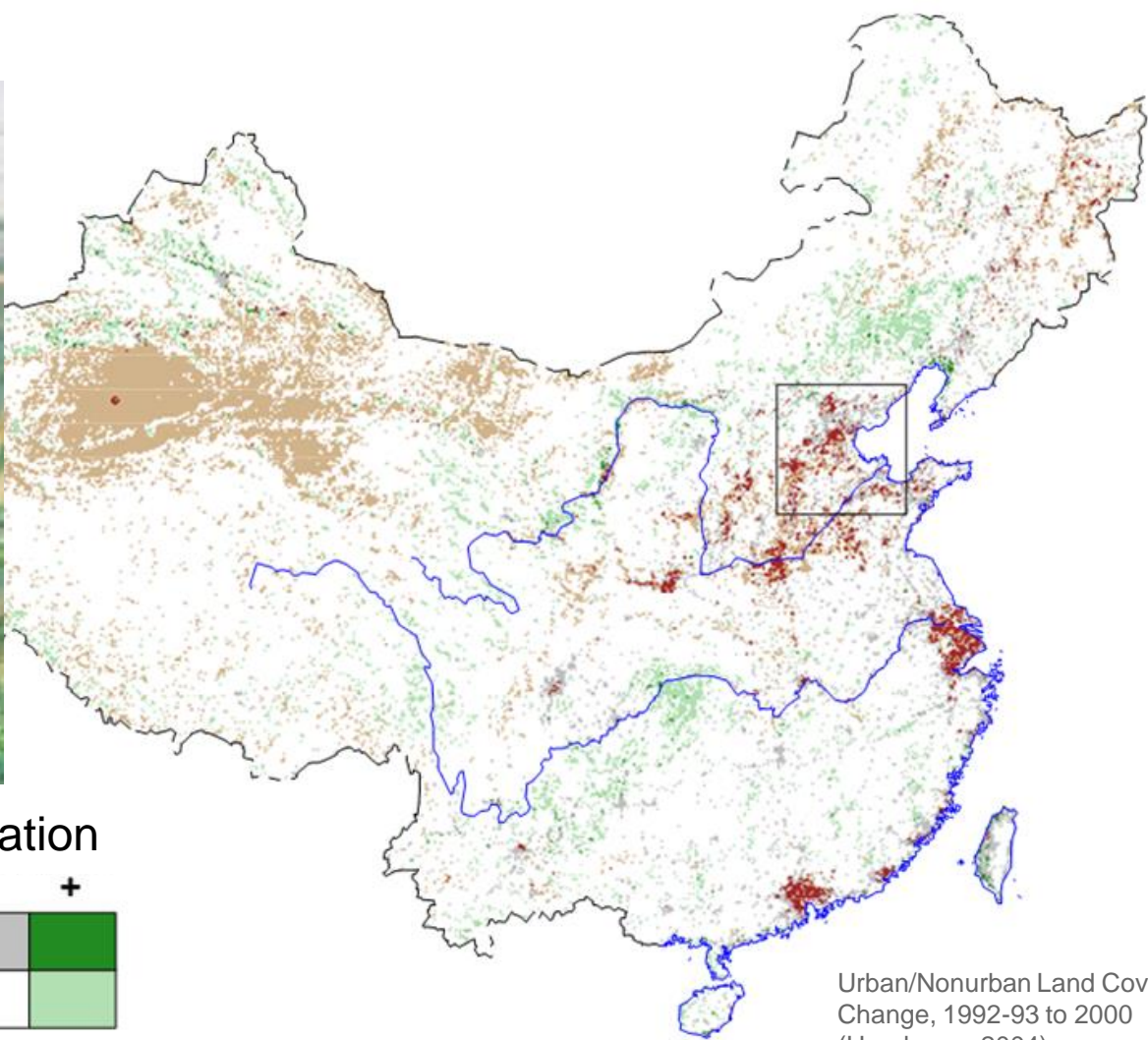
G20

ZOUPING 邹平县

Google

Maxar Technologies Camera: 6,275 m 36°52'21"N 117°44'37"E 124 m 100%

google.com  
/earth



Urban/Nonurban Land Cover Change, 1992-93 to 2000 (Henderson 2004)

Land use layout

Birdeye view

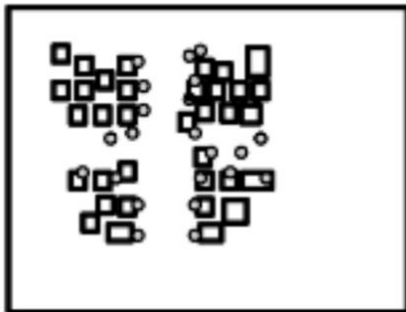
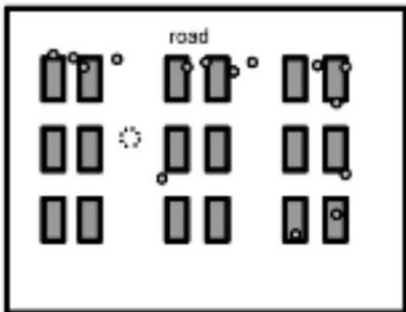
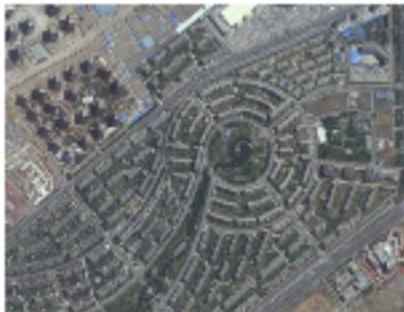
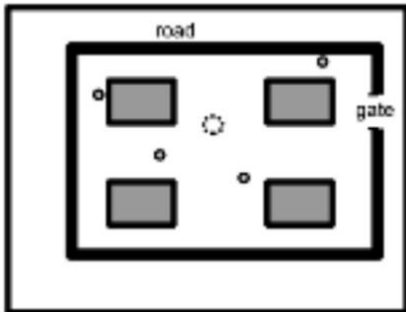
Profile view

Gated communities

Work-unit communities

Urban village

From "The View from Above: A Computational Method in the Study of Modern China."  
Forthcoming in *Journal of Chinese History*



## Guided tour with Google Earth

1. Bauxite mine: [Mapoon, Queensland, Australia](#)
2. Aluminum ingots: [Zouping Changshan Town](#)
3. iPhone City: [Foxconn Zhengzhou Science Park](#)
4. Apple Store: [Hillsdale Shopping Center](#)
5. 1990 Institute: [101 Twin Dolphin Drive](#)
6. Recycling: [Recology San Mateo](#)
7. Disposal: [Ox Mountain Landfill](#)

# Environmental Impacts & Potential Mitigations

1. Bauxite mine
2. Aluminum ingots
3. iPhone City
4. Apple Store
5. 1990 Institute
6. Recycling
7. Disposal



Images: TibetNature.org, Reuters Shanghai, Wikimedia, NetEase



# China, Globalization, and the Environment

Mark Henderson  
Mills College  
[mhenderson@mills.edu](mailto:mhenderson@mills.edu)